



LINED SIGHT GLASSES



KNS - An Antico Venture

ANTICO with 30 years of experience in Corrosion Resistant Pumps for Chemical Industry introduces FLUOROPOLYMER Lined Flow Control Products under the brand, KNS. Our range includes Lined Ball Valves, Lined Plug Valves, Lined Bottom Drain Valves. We also have a range of Accessories which includes Lined Strainers, Sight Flow Indicators, Ball Check Valves.

Keeping with ANTICO's tradition of supplying nothing but the best quality, KNS uses Virgin Unpigmented resin. We use resins from world renowned companies such as Daikin and Asahi.

KNS' in house molding facility and dedicated staff ensure world class quality and reliability.

Features

KNS Lined Sight Glasses offer clear inspection of fluid characteristics of severely corrosive liquid from either side.

Motion flow and color can be inspected visually during the process since this indicator is equipped with two tempered and polished glass windows for ANSI Class 150 Service.

PFA/FEP Lining offers highest corrosion resistance. Minimum lining thickness of 3mm, lining locked by multiple locking grooves.

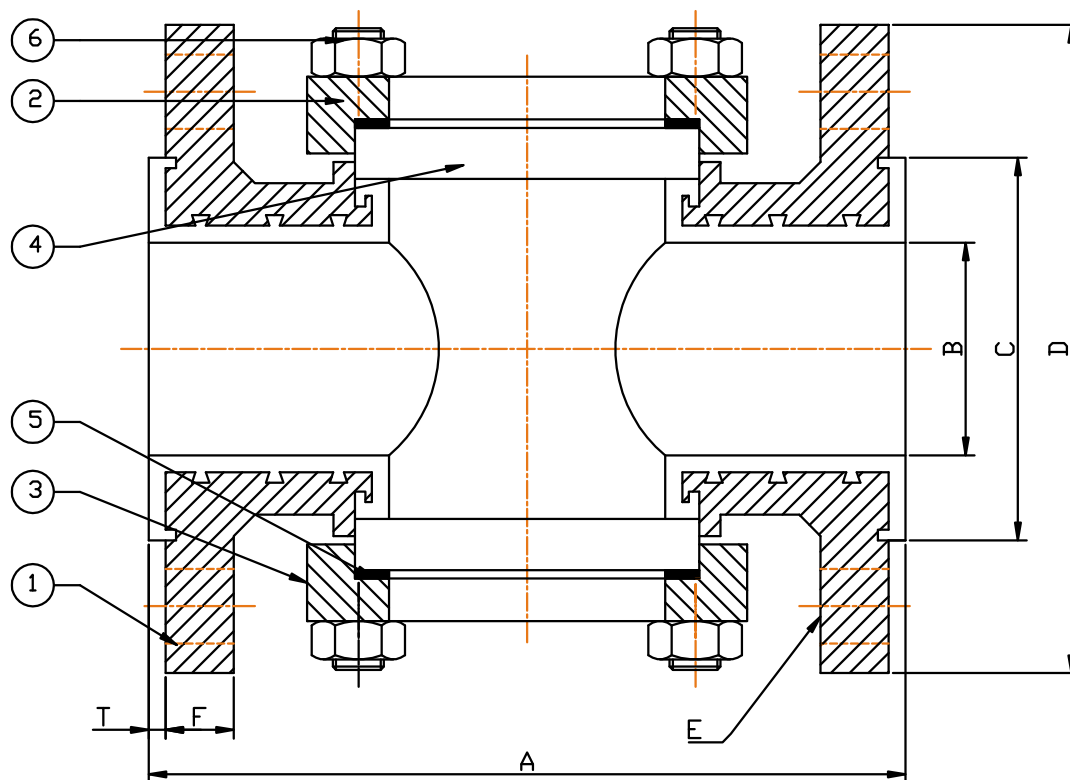
Full port design minimizes pressure losses and increases flow capacities thus reducing energy and pumping costs.

Outer body graded cast iron as per ASTM Standard, other materials like cast steel / stainless steel available on request.

Industries Served

- Acid Transfers
- Caustic & Chlor- Alkali
- Chemicals
- Pharmaceuticals
- Water Treatment

Technical Data



SIZE	A	B	C	D	E			F	T
					P.C.D.	HOLE	Nos.		
25 NB	127	25	51	108	79.5	16	4	11.2	3.5
40 NB	165	40	73	127	98.5	16	4	14.2	3.5
50 NB	178	50	92	152	121	19	4	16	4
80 NB	203	75	127	191	152	19	4	19	4
100 NB	229	100	157	229	190	19	8	24	4

All Dimensions in mm

Temperature : FEP – Max : 180 °C PFA – Max : 200 °C

Flange Connection : ANSI B 16.50 Class 150

Face to Face : ANSI B 16.10 Spark Testing of PFA/FEP Lining at 15 kVA.

Leak Test as per API 598

COMPONENTS	MATERIAL OF CONSTRUCTION
Body, Top Plate and Bottom Plate	Cast Iron / Cast Steel / Stainless Steel
Body Lining	PFA / FEP
Gasket	PTFE
Indicator	Toughened and Tempered Glass
Hardware	Stainless Steel

Product Range



PFA/FEP Lined Ball Valves sizes from 25 NB to 100 NB.



PFA/FEP Lined Plug Valves. Sizes from 25 NB to 80 NB.



PFA/FEP Lined Bottom Drain Valves / Flush Bottom Valves.
Sizes from 80 NB – 50 NB to 150 NB – 100 NB



PFA/FEP Lined Basket Strainers with PTFE/FEP/PVDF Baskets.
Sizes from 25 NB to 80 NB



PFA/FEP Lined Ball Check Valves. Sizes from 25 NB to 100 NB.

KNS Lined Products Pvt. Ltd.

15, Hind Service Industries, 2nd Floor,
Off V. S. Road, Shivaji Park,
Mumbai 400 028

Tel: +91 22 2445 3501 , 2446 8340 , 2446 6496

Fax: +91 22 2444 9271

info@knslinedproducts.com www.knslinedproducts.com